



www.pure-motorsport.co.uk

01841 531102

Renault Clio 172/182 sump guard.

This sump guard is designed to reduce the possibility of sump or gearbox damage due to knocks and scrapes occurring during racing or rallying. Due to the rugged construction and mounting it will also add a huge amount of stiffness to your front sub-frame.

It is easily mounted to the sub-frame using steel rivnuts and countersunk 8mm bolts. The bolts are countersunk to stop any scrapes from damaging the head of the bolts so you can still get the bolts undone! It gives approximately 15mm of clearance under the sump and has a lowered section to leave room for the gear linkage, so that this is also protected.

Fitting.

We strongly recommend that a professional with suitable experience fits this sump-guard.

You will require a rivnut fitting tool to carry out this fitting.

- Jack the car up to a reasonable working height and fit axle stands.
- Remove the original plastic under-tray if fitted.
- Mark the centre of your sub-frame on the front cross-member

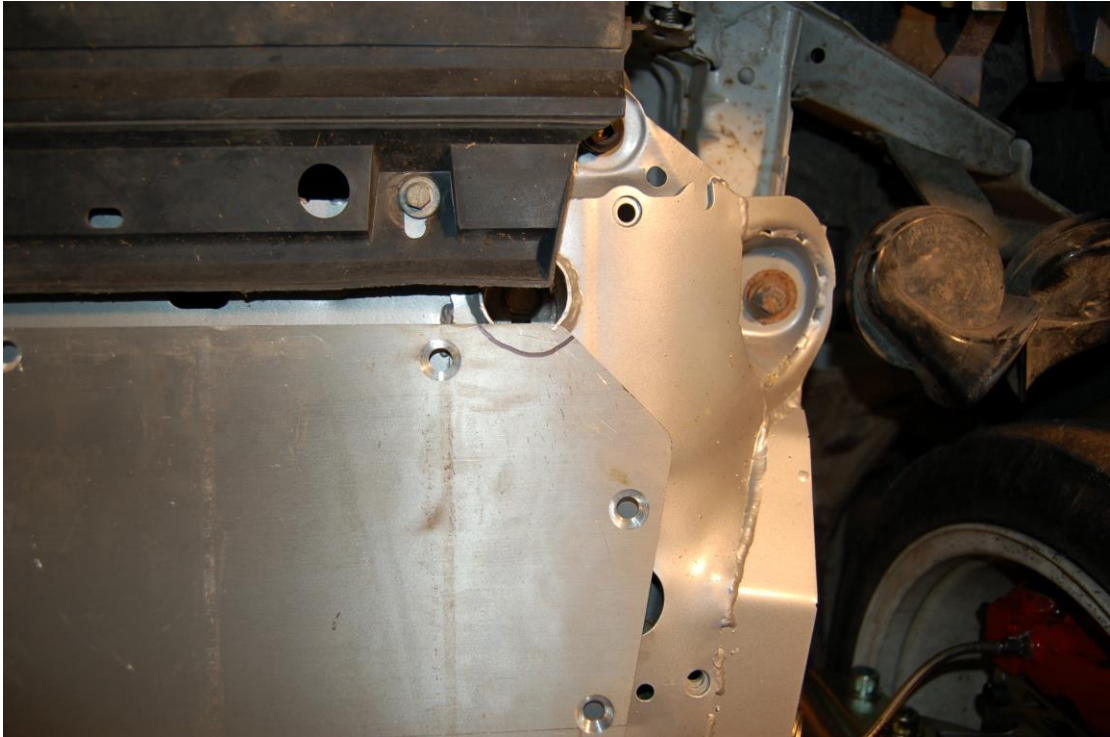
Mark the centre of the sump-guard at the front



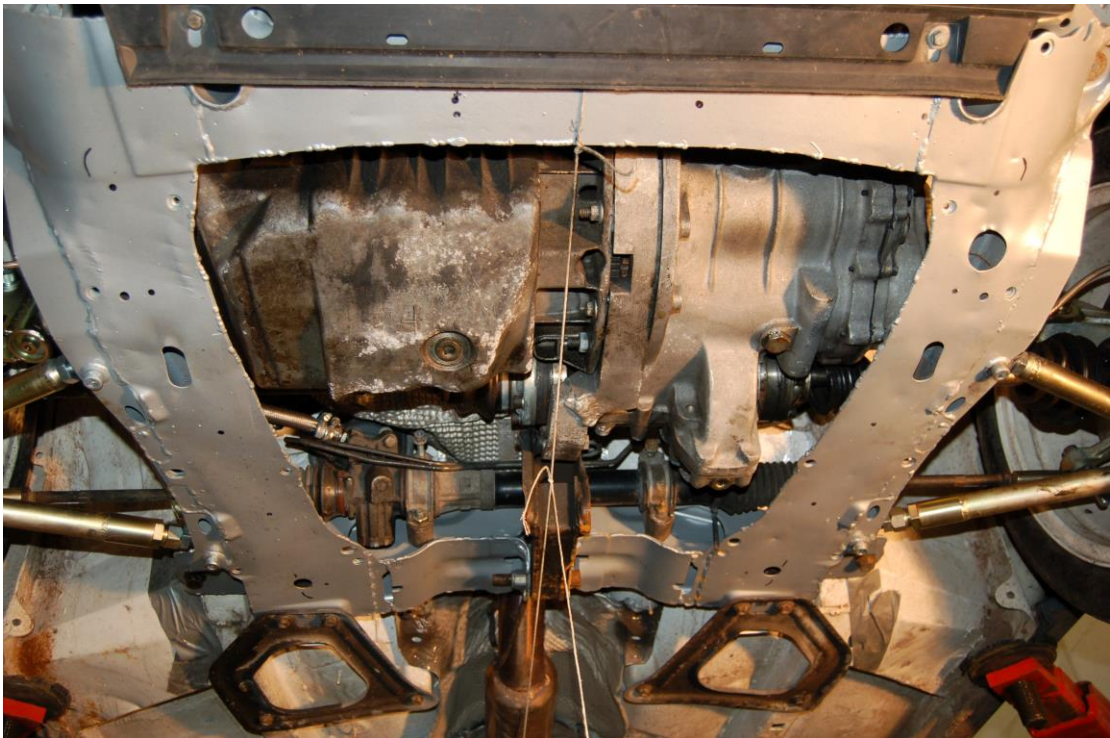
Offer up the sump-guard so that the fold is in a position to offer the best fit.



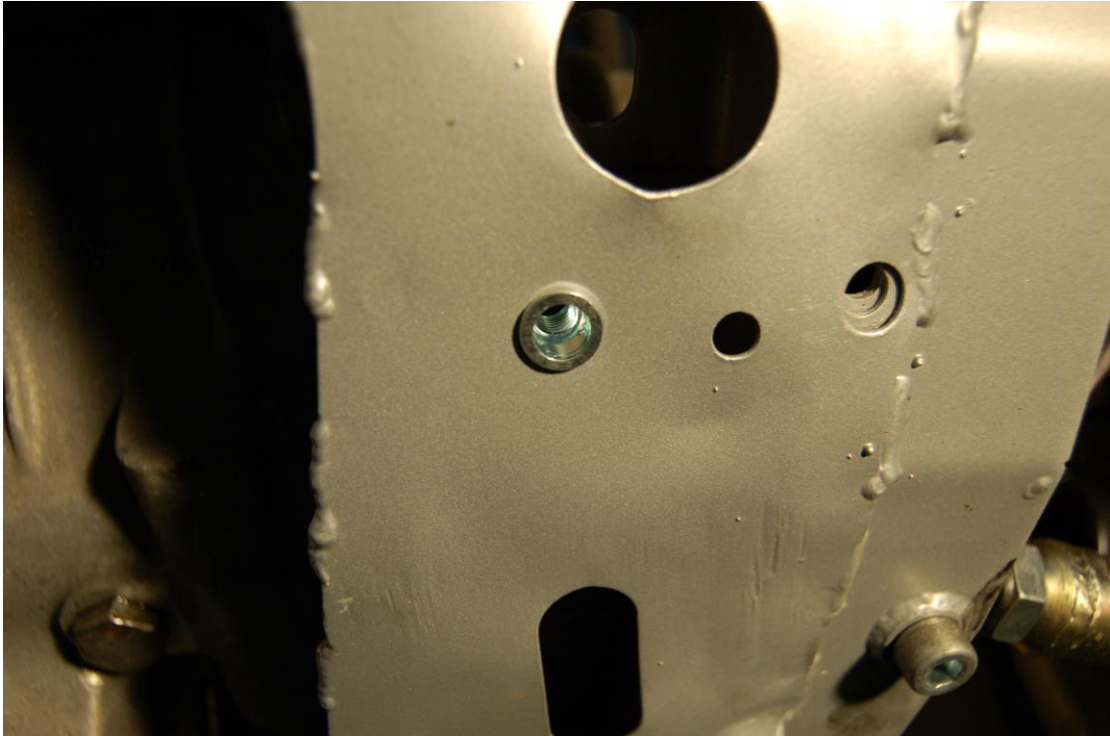
- If you are fitting to a car with a Renaultsport Clio Cup race car subframe you will have to remove some material around the engine mounts.



- Centralise the sump-guard front to rear and left to right using your markings to help.
- Mark the holes onto the sub-frame.



- Centre punch each hole
- Use a small drill to start with and go up in size progressively until you have an 11mm hole.
- Fit the rivnuts - the rivnuts should be a fairly tight fit and may need a little tap to get into place.



- Rivet the nuts in place



- Hold the sump-guard in place and fit the bolts. A little grease may be advisable on the threads to make disassembly easier if the guard will be in place for extended lengths of time.



If you get stuck please ring for help and advice.

www.pure-motorsport.co.uk

enquiries@pure-motorsport.co.uk

01841 531102